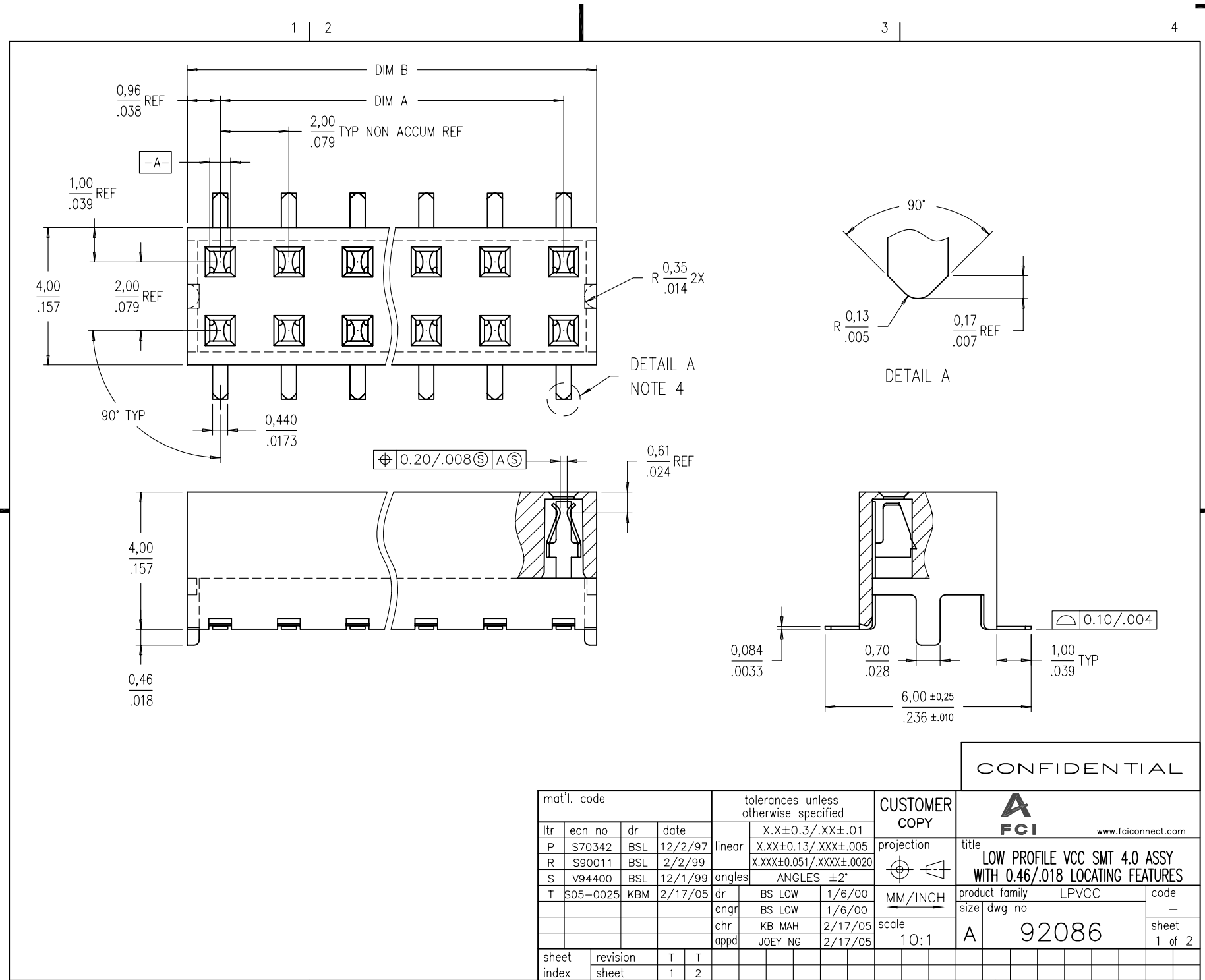


Tous droits strictement reserves. Reproduction ou communication a des tiers interdite sous quelque forme que ce soit sans autorisation ecrite du proprietaire. Propriete de c FCI. Droits de reproduction FCI.



All rights strictly reserved. Reproduction or issue to third parties in any form whatever is not permitted without written authority from the proprietor. Property of FCI. Copyright FCI.



CONFIDENTIAL

mat'l. code				tolerances unless otherwise specified		CUSTOMER COPY	FCI www.fciconnect.com	
ltr	ecn no	dr	date	linear	X.X±0.3/.XX±.01		projection	title
P	S70342	BSL	12/2/97		X.XX±0.13/.XXX±.005	MM/INCH	LOW PROFILE VCC SMT 4.0 ASSY WITH 0.46/.018 LOCATING FEATURES	
R	S90011	BSL	2/2/99		X.XXX±0.051/.XXX±.0020			
S	V94400	BSL	12/1/99	angles	ANGLES ±2°	scale	product family LPVCC	code
T	S05-0025	KBM	2/17/05	dr	BS LOW 1/6/00	10:1	size dwg no	-
				engr	BS LOW 1/6/00		A	92086
				chr	KB MAH 2/17/05			sheet 1 of 2
				appd	JOEY NG 2/17/05			
sheet index	revision sheet	T	T					
		1	2					

cage code 22526

Tous droits strictement réservés. Reproduction ou communication a des tiers interdite sous quelque forme que ce soit sans autorisation écrite du propriétaire. Propriété de c FCI. Droits de reproduction FCI.

All rights strictly reserved. Reproduction or issue to third parties in any form whatever is not permitted without written authority from the proprietor. Property of FCI. Copyright FCI.

PRODUCT NO	POSITIONS	DIM. A	DIM. B
92086-X04	2 X 2	2,00/,079	3,92/,154
-X06	2 X 3	4,00/,158	5,92/,233
-X08	2 X 4	6,00/,236	7,92/,312
-X10	2 X 5	8,00/,315	9,92/,391
-X12	2 X 6	10,00/,394	11,92/,469
-X14	2 X 7	12,00/,472	13,92/,548
-X16	2 X 8	14,00/,551	15,92/,627
-X18	2 X 9	16,00/,630	17,92/,706
-X20	2 X 10	18,00/,709	19,92/,784
-X22	2 X 11	20,00/,787	21,92/,863
-X24	2 X 12	22,00/,866	23,92/,942
-X26	2 X 13	24,00/,945	25,92/1,020
-X28	2 X 14	26,00/1,024	27,92/1,099
-X30	2 X 15	28,00/1,102	29,92/1,178

PRODUCT NO	CONTACT AREA PLATING.	SOLDER TAIL PLATING.
92086-XXX	0 = 0,20um/8u" Au	TIN/LEAD
	1 = 0,76um/30u" Au	TIN/LEAD
	3 = 0,38um/15u" Au	TIN/LEAD
	6 = 0,76um/30u" PdNi WITH 0,076um/3u" Au FLASH (POST PLATED)	
92086-XXXLF	0 = 0,20um/8u" Au	100% MATTE TIN.
	1 = 0,76um/30u" Au	100% MATTE TIN.
	3 = 0,38um/15u" Au	100% MATTE TIN.
	6 = 0,76um/30u" PdNi WITH 0,076um/3u" Au FLASH (POST PLATED)	

NOTES :

- HOUSING MAT'L : HIGH TEMP PLASTIC (PCT BLACK)
- TERMINAL MAT'L : BeCu.
- TERMINAL RETENTION 0,5 Kg/1,1 Lbs.
- "V" CUT OPTIONAL - MANUFACTURING PROCESS OPTION.
- PRODUCT DESCRIPTION CODE :

XXXXX-XXXLF

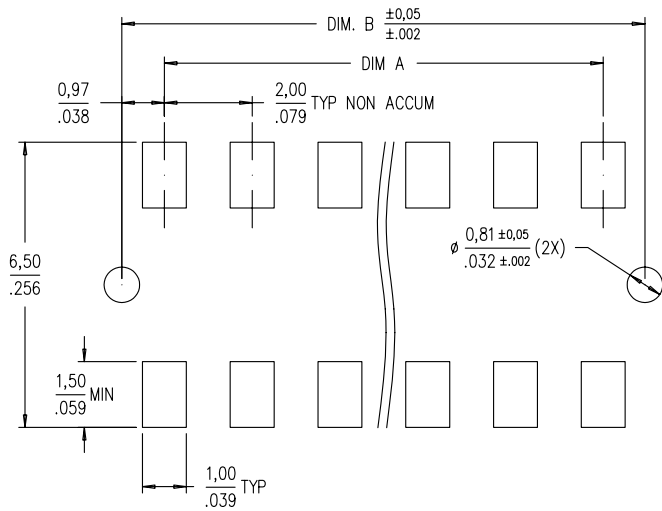
- LEAD FREE (8)
- EXTENSION NUMBER
- BASE NUMBER

6 PACKAGING :

- XXXXX-XXX --- STD PACKAGING IN TUBE.
- XXXXX-XXXTR --- TAPE AND REEL (CONDUCTIVE) PACKAGING WITH PICK-UP CAP (SEE FIG 1).
- XXXXX-XXXTRN --- TAPE AND REEL (CONDUCTIVE) PACKAGING WITHOUT PICK-UP CAP.
- XXXXX-XXXTC --- PACKAGING IN TUBE WITH PICK-UP CAP.

7 THE HOUSING WILL WITHSTAND EXPOSURE TO 255° C PEAK TEMPERATURE FOR 10 SECONDS IN A CONVECTION, INFRA-RED OR VAPOR PHASE REFLOW OVEN.

(8) THIS PRODUCT MEETS EUROPEAN UNION DIRECTIVES AND OTHER COUNTRY REGULATIONS AS DESCRIBED IN GS-22-008.



RECOMMENDED PAD LAYOUT

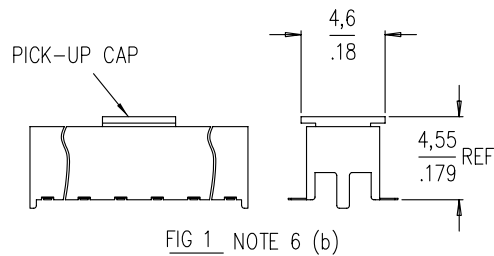


FIG 1 NOTE 6 (b)

CONFIDENTIAL

mat'l. code				tolerances unless otherwise specified		CUSTOMER COPY		FCI www.fciconnect.com		
ltr	ecn no	dr	date	linear	X.X±0.3/.XX±.01	projection	title			
T					X.XX±0.13/.XXX±.005		LOW PROFILE VCC SMT 4.0 ASSY			
					X.XXX±0.051/.XXX±.0020		WITH 0.46/.018 LOCATING FEATURES			
				angles	ANGLES ±2°	MM/INCH	product family	LPVCC	code	
				dr	BS LOW 1/6/00		size	dwg no	sheet	
				engr	BS LOW 1/6/00		A	92086	2 of 2	
				chr	KB MAH 2/17/05		scale	10:1		
				appd	JOEY NG 2/17/05					
sheet index	revision sheet									

cage code 22526

PDM: Rev:T

STATUS: Released

Printed: Feb 01, 2007

ACAD